

TECHNICAL DATASHEET

CNC-Universal 5-Axis-Machining Center with Pallet Changer

Manufacturer	REIDEN
Type	RX10 PCS
Control	HEIDENHAIN iTNC530 HSCI
Built	2011



Travels

Longitudinal movement of the milling head (X-axis)	1.000 mm
Transverse movement of the table (Y-axis)	1.100 mm
Vertical movement (Z-axis)	810 mm
Swivel axis of the milling head (A-axis)	0 - 180 °
Rotational movement of the table (C-axis)	360 °

Technical Data

CNC-5-Axis-Machining Center with Pallet changer

REIDEN RX10



Working Area

Clamping surface	Ø1.000 x 800 mm	Hole Pattern 50x50mm D16-M16
Max. workpiece height with fixtures	1.480 mm	
Max. swing diameter	Ø1.000 mm	
Max. workpiece weight	800 kg	

Feeds and Rapid traverse

X, Y, and Z axes, stepless	0 - 60.000 mm/min.
Rapid traverse in X / Y / Z axes	60.000 mm/min
Rapid traverse in A / C axes	20 U/min
Feed force	10.000 N
Feed torque, A axis	1.230 Nm
Feed torque, C axis	2.500 Nm

REIDEN – Milling Head with DDT-Technology

This RX10 model features the milling head design with DDT technology developed by REIDEN, Switzerland.

The A-axis is integrated into the milling head as a head swivel axis. The swivel movement is driven by a worm gear that can continuously adjust the front part of the milling head from a vertical to a horizontal spindle position over a 45° plane within a 90° solid angle. To protect the worm gear, the spindle drive is hydraulically clamped after successful positioning. This results in a very compact and rigid design.

Swivel range (axis angle)	0 / 180 Grad	
Holding torque	2.300 Nm	Hydr. Clamping sleeve
Tangential torque	1.230 Nm	
Tool holder	HSK63 A	DIN69893-1

Double Drive Technology DDT - Two Drive Motors in One Head

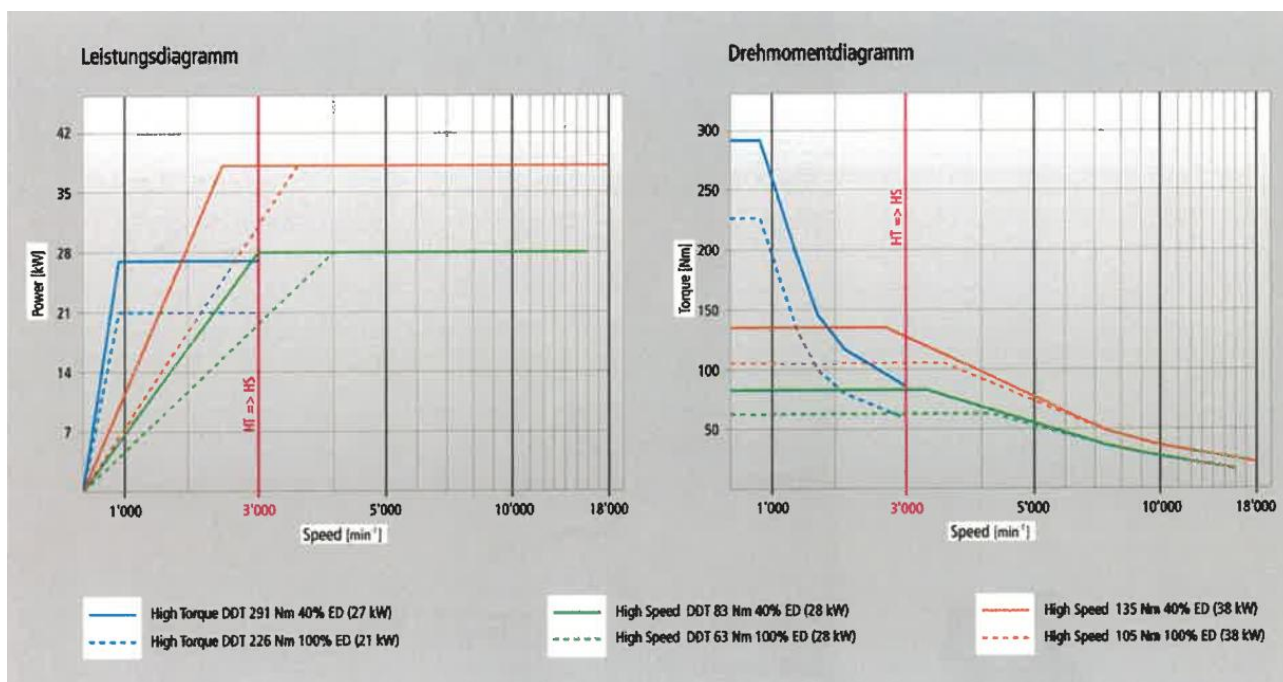


1 - High Speed (HS)

Max. Power High Speed Motor	28 kW	100 ED
Max. Torque High Speed Motor	63/83 Nm	100/40 % ED
Max. Speed High Speed Motor	16.000 min-1	

2 - High Torque (HT)

Max. Power High Torque Motor	21/27 kW	100/40 % ED
Max. Torque High Torque Motor	226/290 Nm	100/40 % ED
Max. Speed High Torque Motor	3.000 min-1	



Shelf magazine with automatic toolchanger

Type of magazine	Shelf type	
Tool stations	273	Plätze
Max. tool length	400	mm
Max. tool diameter	Ø80	mm
Max. tool diameter	Ø160	mm Auxiliary slot free

The large shelf magazine can hold up to 38 oversized tools (Ø160x400mm)

Dimensions and Weight

Space requirements	~ 5.950 x 4.000	mm
Overall height	~ 3.400	mm
Machine weight	~ 18.000	kg

Connection Data

Operating voltage	3 x 400	V
Operating frequency	50	Hz
Total power consumption (100% duty cycle)	55	KVA
Required mains fuse	100	A

Equipment and Accessories

REIDEN RX10 CNC Universal 5-Axis Machining Center, in Swiss precision featuring a highly rigid design with a column, cross slide, and tandem vertical drive, ideal for single-part and small-batch production

- NC swivel milling head, hydraulically clamped, with HSK-A63 spindle taper and dual-spindle technology (DDT), motor spindle 16,000 rpm and gearbox spindle 3,000 rpm
- Automatic pallet changer with setup station for automatic, production-time-independent setup, as well as two pallets 1.000 x 800mm with 50x50 mm hole pattern and a lift-and-swivel unit for automatic changing of work pallets
- CNC control with HEIDENHAIN iTNC530 HSCI 3D path control
- RotoClear viewing window, chip flushing in the work area, belt filter system, and internal coolant supply 40 bars
- Large tool magazine with its own loading station, equipped with 273 slots, automatic tool changer, and up to 38 slots for extra-long tools
- 3D measuring probe, BLUM brand
- Machine cooling unit
- Central lubrication, spindle bearing lubrication
- Extraction system for coolant mist, IFS brand
- Enclosed full-protection cabin with large, two-part loading door and large viewing window
- Swiveling control panel for machine operator
- Chip conveyor, discharge to the right of the operator, discharge height 1,235 mm
- Main switch ON: 30,511 h
- Program run time approx. 10,750 h
- Spindle hours: High-Torque approx. 2,730 h | High-Speed approx. 6,851 h

Your address for
high quality machine tools

FLECKENSTEIN

Werkzeugmaschinen

Technical Data

CNC-5-Axis-Machining Center with Pallet changer

REIDEN RX10



Tel. +49 (0) 6096 / 97060 | fleckenstein@fleckenstein-machine.com | www.fleckenstein-machine.com



subject to errors and prior sale

page 5 of 6

Your address for
high quality machine tools

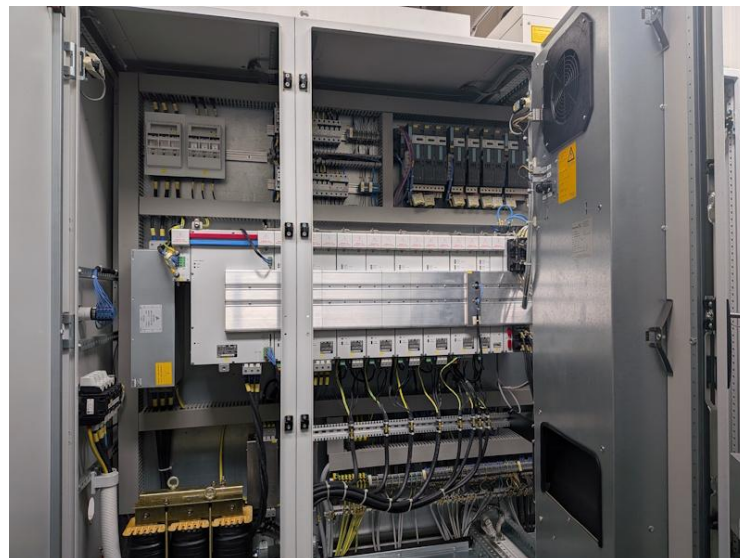
FLECKENSTEIN

Werkzeugmaschinen

Technical Data

CNC-5-Axis-Machining Center with Pallet changer

REIDEN RX10



Tel. +49 (0) 6096 / 97060 | fleckenstein@fleckenstein-machine.com | www.fleckenstein-machine.com



subject to errors and prior sale

page 6 of 6